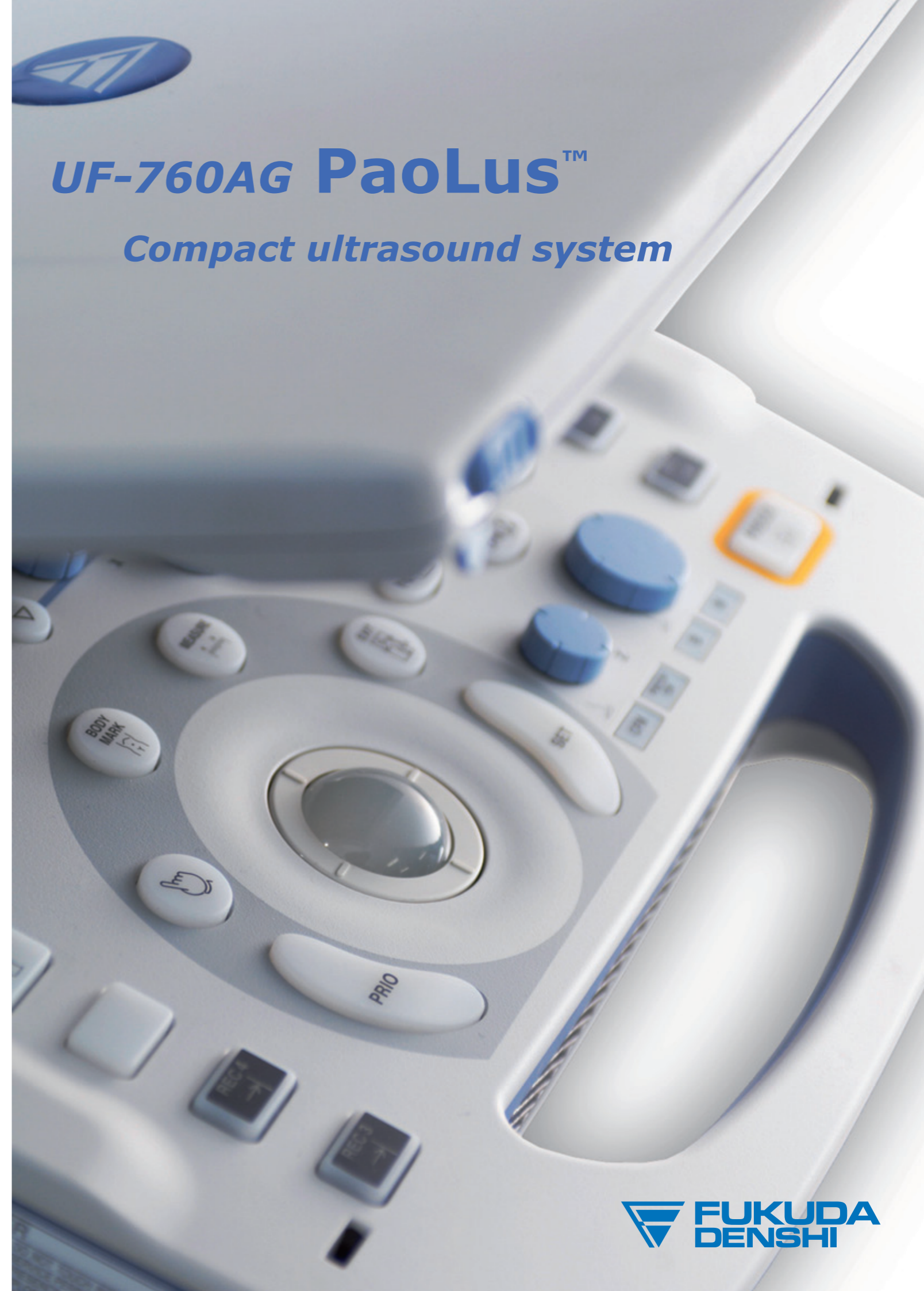


UF-760AG Specifications

Display Unit	15" active matrix LCD flat monitor				
Scanning Methods	Electronic Phased array / Convex array / Linear array / 3D&4D				
Beam Former	Digital, Multi-Beam Processing				
Frame Rate	More than 200 fps in B-mode (transducer and application dependent); max 40 fps in CFM (depth, angle and clinical application dependent) and max 20 volume/s in 4D				
B-Mode	Operation Mode	Spatial and Frequency Compound (option) Trapezoidal Imaging (option)			
	Focus Method	Transmitting : 1 step (8 types selectable) Receiving : continuous dynamic focus			
	Display Depth	2 ~ 30 cm (depending on probe)			
	Frequency	2 types selectable and AFA (Automatic Frequency Adjustment)			
	Tissue Harmonic Imaging	on/off, 2 types frequency selectable (depending on probe)			
	Color Scale Imaging	8 types B color selection			
	Display Control	up/down, right/left, view angle variable (depending on probe)			
M-Mode	Display Mode	Moving Bar			
	Sweep Speed	4 steps (2 to 8 sec/screen)			
	Color Scale Imaging	8 types M color selection			
PW-Mode	Display Mode	PWD mode, High PRF mode Spectral Doppler Tissue Imaging (option)			
	Sweep Speed	4 steps (2 to 8 sec/screen)			
	Velocity Range	± 500Hz to ±24KHz (transducer and application dependent)			
CFM Mode	Display Mode	Velocity mode, Directional Power mode, Velocity Power mode Doppler Tissue Imaging (option)			
	Velocity Range	± 250Hz to ±24KHz (transducer and application dependent)			
	Color Map	Velocity: 4 types, Power: 4 types, DTI: 4 types			
CW Mode (Option)	Display Method	CWD mode			
	Sweep Speed	4 steps			
	Velocity Range	± 1KHz to ±48KHz (transducer and application dependent)			
Imaging Control	Gain	60 ~ 100 dB, 32 steps			
	STC	8 sliders			
	Dynamic Range	48 ~ 96 dB, 8 steps			
	Echo Enhance	8 Steps			
	Smooth	4 Steps			
	Post Processing	8 Steps			
	Line Density	2 Steps			
	ECG synchronized acquisition	Dual Time			
Probe Connection	2 Active Connectors				
Biological Signal	ECG (Option)				
Measurements and Calculations	General; Cardiology; Vascular; Urology; OB/GYN; Report Function				
Patient Archiving	Integrated PACS; Modality Work list; Long Term Archiving; Backup				
Image Filing	600 frames (Cine Memory (max 3000 frames with Long Cine option) USB Memory; 160 GB HDD; External DVD				
Network	LAN				
	DICOM (option)				
General	Power	100-120/200-240 ±10%; 50-60Hz			
	Power Consumption	150VA			
	External Dimensions	367(W)x364(D)x98(H) mm			
	Weight	6.9 kg (w/o battery)			
Options	UF-760AG Trolley	OTR-02	CW Doppler	UF-760AG-CWD	
	ECG Unit	UF-760AG-ECG	Cardiac Package	UF-760AG-CPG	
	i/o Extension Unit	UF-760AG-IOE	DICOM Store SCU	UF-760AG-SCU	
	Battery Pack	UF-760AG-BAT	DICOM MWL	UF-760AG-MWL	
	DL-Adapter	UF-760AG-DLA	Stress Echo Package	UF-760AG-STE	
	Isolation Transformer	UF-760AG-ISO	Long Cine	UF-760AG-LCL	
	Foot switch	OA-293	3D/4D	UF-760AG-4D	
	Cable Manager for Trolley	UF-800XTD-CMG	Easy Optimization	UF-760AG-EOP	
			Trapezoidal & Compound	UF-760AG-TAC	
	Probes	Phased Array Sector	FUT-SA162-5P	Convex High Frequency	FUT-4-9MC
		Phased Array Sector	FUT-3-8PA	Linear 50mm	FUT-5-12L50
		Convex 60R	FUT-CA602-5P	Linear 40mm	FUT-LA385-12P
Convex 4D Volume		FUT-CVA403-6A	Trans-Vaginal	FUT-TVG114-7A	

FUKUDA DENSHI reserves the right to change specifications without notice.



UF-760AG PaoLus™

Compact ultrasound system

A new generation of small ultrasound systems

UF-760AG can do more

Excellent performance
Undeniable image quality
Hypersensitive Pulsed and Continuous Doppler

With less than 7 kg



A high image quality leads to earlier disease detection, more accurate diagnosis and less invasive treatments. In order to ensure patient's premium care, Fukuda Denshi decided to provide to even more physicians, a small and easy to carry device with the best performance of an ultrasound system.

Small system, big innovation

As a result of its small size, light weight and large battery autonomy (more than one hour), UF-760AG can be easily transported, making it the right choice for all point-of-care environments such as emergency rooms, ambulances, domiciliary care or even the sports field.



Large Range of Features and Options

- Cardio Package (including Anatomical M-mode) • CW • Stress Echo • Trapezoidal Imaging
- Easy Optim. • Spatial Compounding • 3D/4D • Long Cine Loop • DICOM MWL, Store SCU

Complete and Efficient

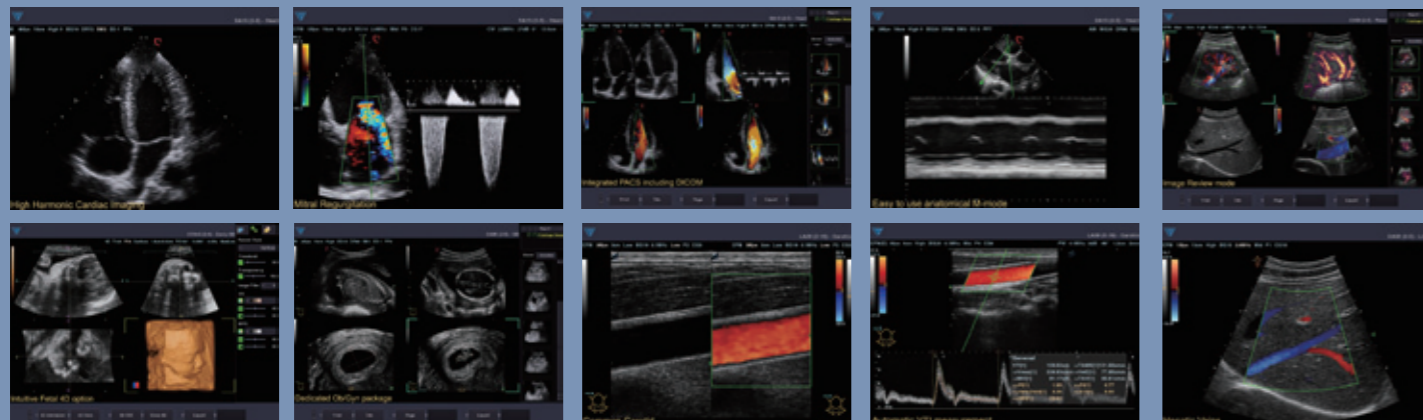
- ✓ Intuitive Workflow
- ✓ Large Ultrasound Area
- ✓ State of the art image quality
 - ✓ Multi languages
- ✓ Full Measurement and Report Package
 - ✓ Big storage capacity
- ✓ Easy image setup through "Easy Optim."
 - ✓ i/o Extension Unit



All these features allow having a complete and efficient system in a very compact size.

One portable device, two probes

Large Range of Medical Applications



Switch probe, application and setup at a keystroke time. With two active connectors integrated directly on UF-760AG your examinations will be faster, better and more comfortable.

Full Probe Assortment

- | | | | | |
|----------------|-------------------------|------------------|--------------------|-----------------------|
| Cardiac | Vascular | Abdominal | Small Parts | Ob/Gyn |
| SA16
3-8PA | LA38
5-12L50
SA16 | CA60
CVA40 | 5-12L50
LA38 | CA60
CVA40
TV11 |

